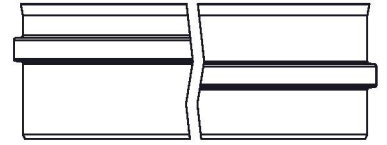
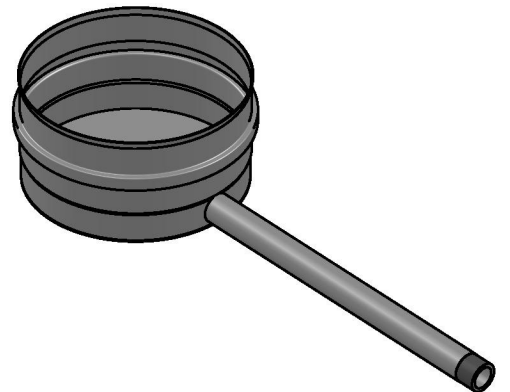


Possible type of female part "FU"



1:5 (150)



Ø				115	120		130		150	160	180									
A				115	120		130		150	160	180									
kg				0,6	0,6		0,6		0,6	0,7	0,7									

notes:
ENCD

DIN ISO 13920 Tolerances B

revisions-no. A mm / kg

	date	name
drawn by	10.10.20	JMA
checked by	10.10.20	SWA
approved by	10.10.20	JWY
modified by		

Jeremias[®]
CHIMNEY SYSTEMS

description Condensate pan with nipple

code FU01B

drawing-no. 01-01-20-1014-000

scale

1:3

format

A4

sheet

1 of 1

