

A

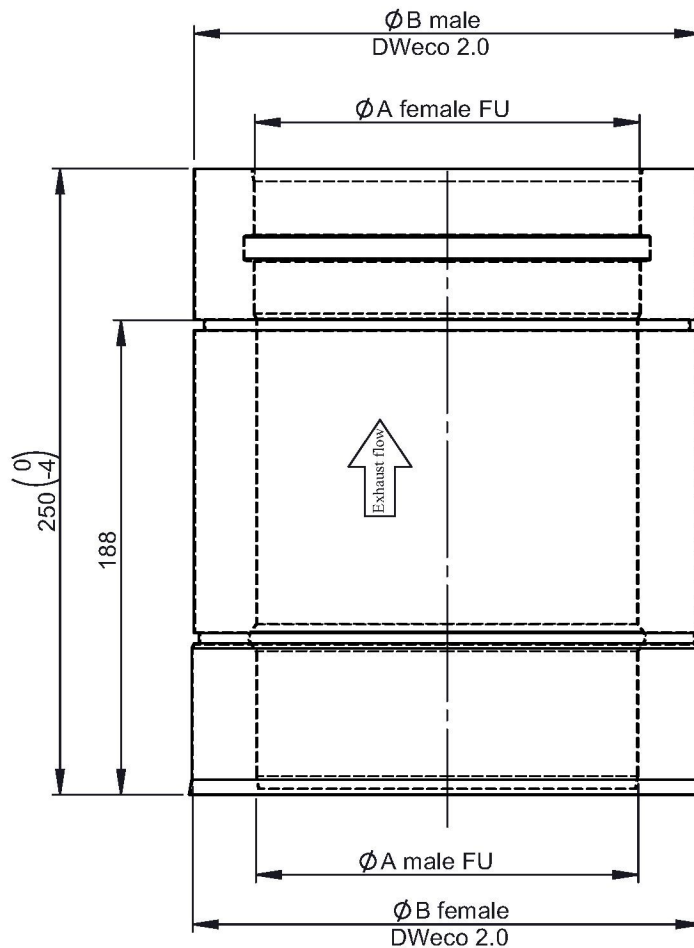
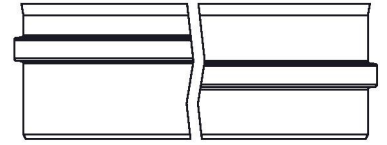
B

C

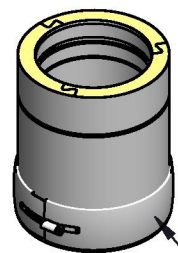
D

E

F

Possible type of female
part "FU"

1:10 (150)



incl. system clamp

Ø					130	150	160	180											
A					130	150	160	180											
B					180	200	210	230											
kg					1,5	1,6	1,7	1,9											

notes:
ENCD

DIN ISO 13920 Tolerances B

revisions-no.

mm / kg

	date	name
drawn by	12.12.20	JMA
checked by	12.12.20	SWA
approved by	12.12.20	JWY
modified by		

Jeremias[®]
CHIMNEY SYSTEMS

description Straight pipe element 250 mm

code 215-DWECO 15

drawing-no. 02-35-4200-205

scale

1:6

format

A4

sheet

1 of 1

