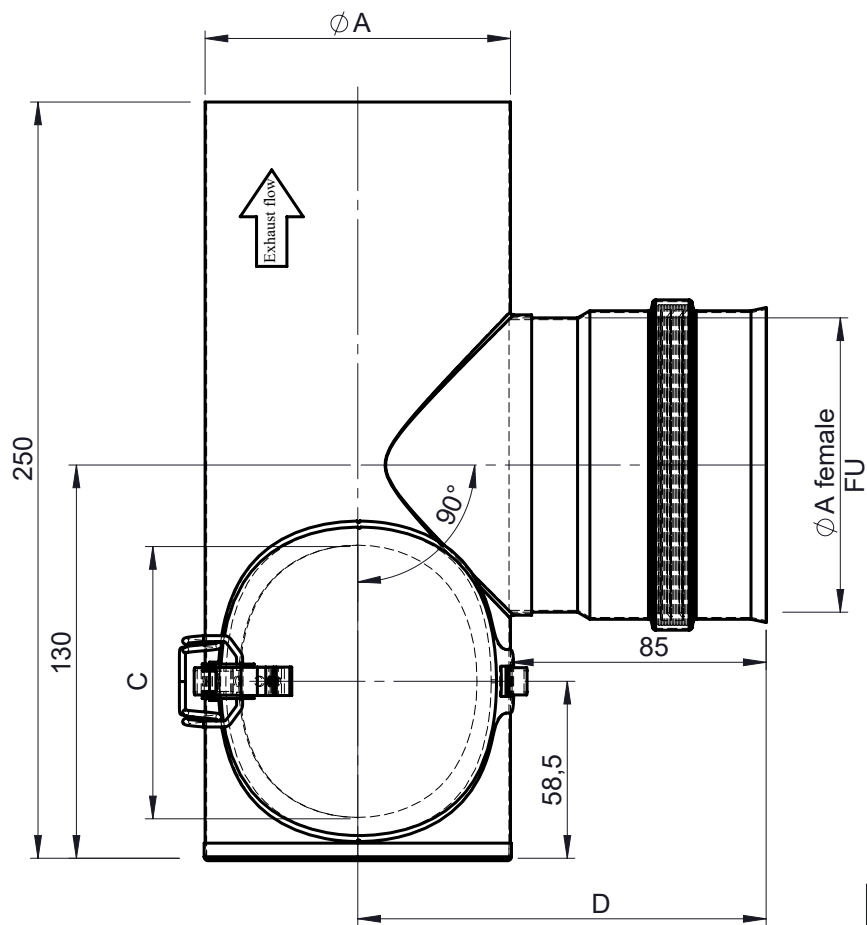
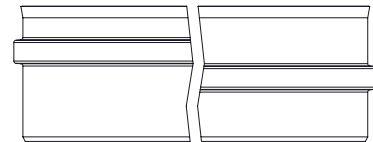


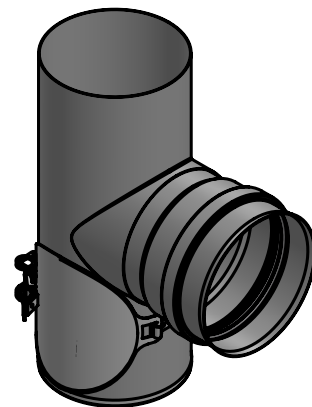
A  
B  
C  
D  
E  
F



Possible type of female part "FU"





1:5 (Ø0100)



Code	Painted
<b>EWPV1419</b> Ø	not painted (shiny)
<b>15-EWPV1419</b> Ø	black
<b>25-EWPV1419</b> Ø	grey

Ø	<b>080</b>	<b>100</b>
<b>A</b>	080	100
<b>C</b>	70	90
<b>D</b>	125	135
<b>kg</b>	0,5	0,6

notes:	DIN ISO 13920 Tolerances B			<div> CHIMNEY SYSTEMS</div>	scale
	revisions-no. 05				1:5
		date	name	description Pipe tee 90° + clean-out opening	format A4
	drawn by	11.01.20	JMA		sheet 1 of 1
	checked by	11.01.20	SWA		
	approved by	11.01.20	JWY		
	modified by	23.05.23	PMA	code	<div></div>
				drawing-no. 01-06-21-2235-000	

Pipe tee 90° + clean-out opening