
ROBOTIC POOL FLOOR CLEANER

ORACA 300CL

HJ2152



USER MANUAL

Important Precautions

1. Please read the manual carefully, and use the cleaner according to the manual. We are not held liable for any loss or injury caused by improper use.
2. The cleaner cannot be used by children under 8 years old or people with mental disabilities. If necessary, please do so under adult guardian. Please do not let children ride on the product or play the product as a toy.
3. In order to avoid any accident or damage, it is strongly recommended to remove the cleaner from the pool and to fix the cleaner indoor in at least 3.5m away from the swimming pool for charging.
4. Power off the cleaner and the adapter must be connected to a leakage protected and earthed socket when charging.
5. Use the accessories recommended or sold by the manufacturer only.
6. Do not operate the cleaner when there are people in the pool.
7. Do not power on the cleaner when it is out of the water.
8. Always clean and wash the filter tray after use.
9. The cleaner should be stored in a cool and ventilated place, away from direct sunshine.
10. Only professionals can disassemble the sealed driving kit of the cleaner.
11. It is forbidden to use the cleaner in an environment above 60 °C and charge it in the environment below 0 °C.
12. It is forbidden to collide the battery box with sharp parts and to fall or impact the it!
13. The cleaner should be charged every three months if it needs to be stored for a long time to maintain battery life (more than 3 months: $23 \pm 5^{\circ}\text{C}$, $65 \pm 20\%\text{RH}$, at least 80% battery remaining capacity).
14. The battery are prohibited from charging for a long time. It is recommended that the battery should not be charged for more than 6 hours.

Attention

1. Put into or lift out of the pool with the cleaner bottom towards the wall to avoid any possible scratches to the pool. Hold the top handle and power on the cleaner. The cleaner will start working after emptying trapped air inside (about 20s), then the cleaner can immerse into the pool floor.



2. The cleaner will self-beach when finishing working, then use the hook to lift it out of the pool.



Content

1. INTRODUCTION	4
2. SAFETY	4
3. SPECIFICATIONS.....	5
4. OPERATION INSTRUCTION	5
4.1 INSTRUCTIONS FOR BUTTON AND INDICATOR.....	5
4.2 HOW TO CHARGE THE BATTERY	6
4.3 CLEANING THE FILTER TRAY	7
5. INSTALLATION OF FOAM PADS.....	8
6. PACKING LIST.....	9
7. WARRANTY	9

1. Introduction

The robotic pool cleaner HJ2152 is a new type of highly efficient and energy-saving swimming pool cleaning robot. Through its advanced computer-controlled program, it can clean the pool walls and bottom automatically. At the same time, it filters the pool water and gets rid of suspended particles without replacing the pool water. It's totally environmental-friendly.

For safe operation, the cleaner is powered by a rechargeable lithium battery (25.9V 7.8Ah).

2. Safety

1. Cleaner's position when charging:

The cleaner needs to be placed in proper position so as to reach the distal end of pool for the cleaner, meanwhile at least 3.5m from pool edge.

2. Use the original adapter only.

3. Power off the cleaner when charging.

4. Do not power on the cleaner for pool cleaning when charging.

5. The cleaner should be charged every three months if it needs to be stored for a long time to maintain battery life (more than 3 months: $23 \pm 5^{\circ}\text{C}$, $65 \pm 20\%\text{RH}$, at least 80% battery remaining capacity).

6. It is forbidden to collide the battery box with sharp parts and to fall or impact the it!

7. It is forbidden to use the cleaner in an environment above 60°C .

8. It is forbidden to charge it in the environment below 0°C .

3. Specifications

Rated input voltage of adapter: 100Vac-240Vac

Input power of adapter: 50Hz/60Hz

Rated output voltage of adapter: 30V

Rated output current of adapter: 2A

Working Cycle: 2h

Filter capacity: appr. 16m³ /min

Filter finesse: 180µm

Moving speed: appr. 10m/min

IP Grade: IPX8

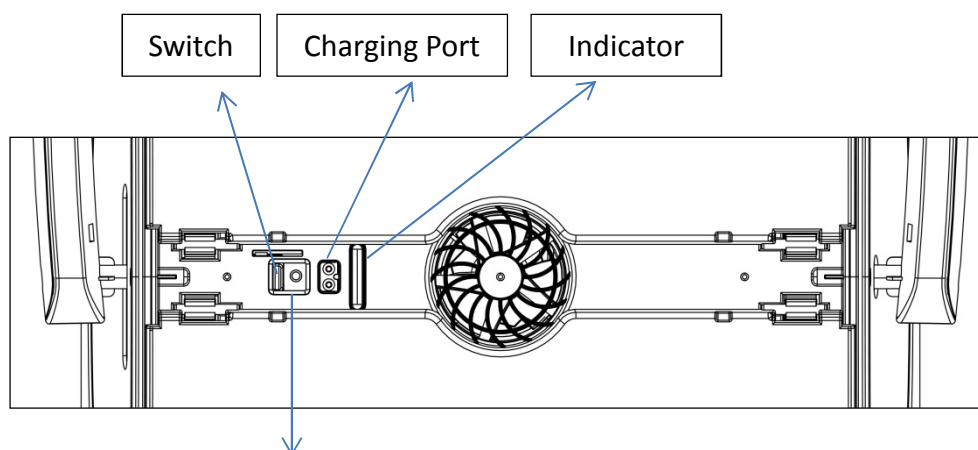
Working environment temperature:

charging: 0°C-40°C; discharging: -20°C-60°C

4. Operation instruction

4.1 Instructions for button and indicator

- a. Put into or lift out of the pool with the cleaner bottom towards the wall to avoid any possible scratches to the pool.



The switch returns to original position after each operation. Push towards the right: it returns to original position, bleu indicator is on and the cleaner is turned on. Push again towards the right: it still returns to original position, red indication is on and the cleaner is turned off.

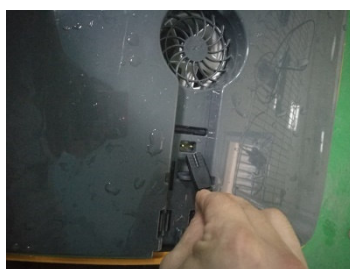
No.	Instructions	Function description
1	Switch	To turn on and turn off the cleaner
2	Indicator	Indicator 1. Blue light is steady on: switch on 2. Blue light flashes: the cleaner is working 3. Yellow light flashes: low battery and self-beaching 4. Yellow light is steady on: finish self-beaching 5. Red light is steady on: switch off 6. Red light flashes: faults
Fault handling: When red light flashes, please switch off and charge it, then put it into the pool again and switch on. If the cleaner cannot get back to normal, please contact after-sales.		

4.2 How to charge the battery

4.2.1 Remove the cleaner from the pool

Place the cleaner indoor in at least 3.5m away from the swimming pool for charging.

Red light indicates the battery is being charged. Green light indicates the charging is finished.

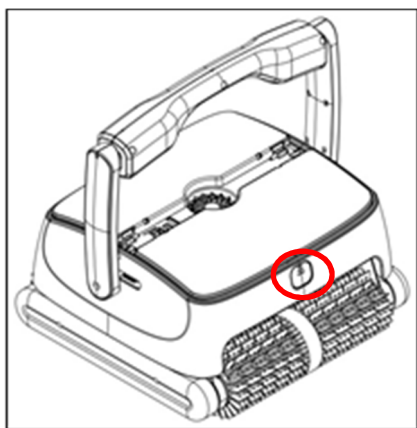


The color and state of indicator	Charging state
Green light is steady on	Waiting for charging or battery not plugged or charging finished

Red light is steady on	The battery is being charged
Red light flashes	Low battery or battery damaged

4.3 Cleaning the filter tray

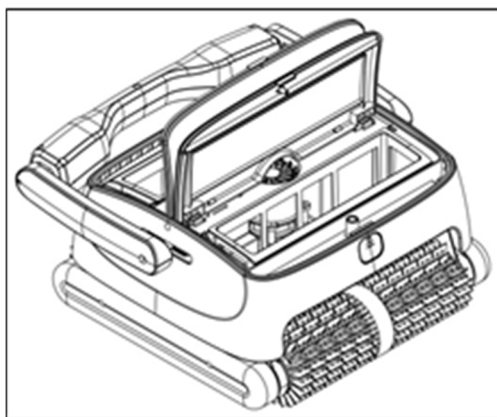
4.3.1 Take out the filter baskets: Press the opening button (4- 1), the top cover will pop-up automatically (4-2), open the top cover (4-3), take out the filter basket (4- 4).



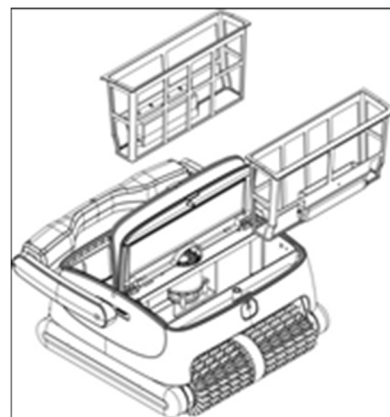
4- 1



4-2

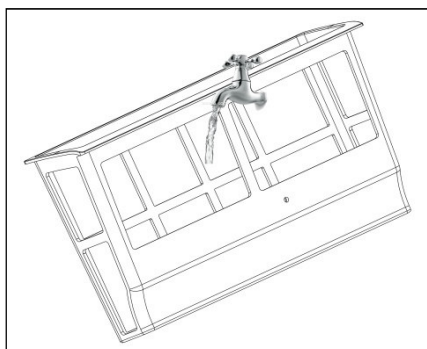


4-3



4-4

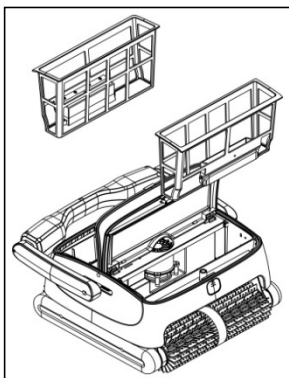
4.2.2 Clean the filter basket



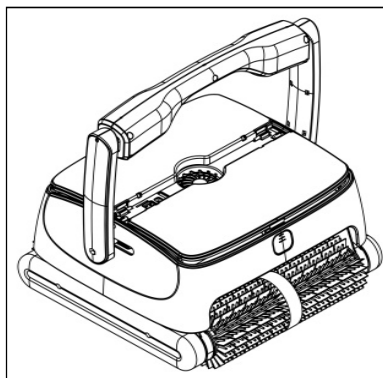
4-5

-
- i. Re-install the filter baskets.

Pay attention to the installation position and close the top cover.



4-6



4-7

5. Installation of foam pads

Install the two foam pads provided below the upper cover if the cleaner climbs the pool wall with difficulty while the filters are clean. (These are supplementary parts that will be used only in this special situation)



Open the cover, stick the self-adhesive pads in the place indicated. Same for another side.

To ensure the good contact between the top cover and the pads, don't put the cleaner into water before 24 hours.

6. Packing list

Item	Name	Model	QTY (pc)	Application	Remark
1	Cleaner body	HJ2152	1		In carton
2	Adapter		1		In plastic bag
3	User manual, certificate, safety rope and hook		1		In plastic bag

7. Warranty

This product has gone through various quality and safety tests carried out by the technical department of the factory.

Warranty Information:

1. The warranty period is 24 months of use on the motors and electrical parts from the date of purchase and established under the terms of the Consumer Code and the legal guarantee against hidden defects and vices in any case applies in the conditions of the articles in the country of purchase.
2. The warranty is void if the product is handled or repaired by foreign nonqualified person in unauthorized repair services.
3. Broken parts are not covered by the warranty.
4. The warranty only covers factory defects, it does not cover damage caused by misuse of the article.
5. Any claim made or repair made during the warranty period will be subject to mandatory presentation of the invoice.