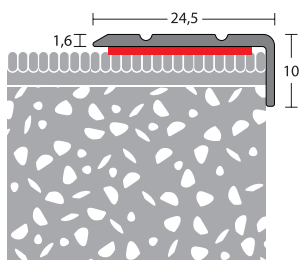
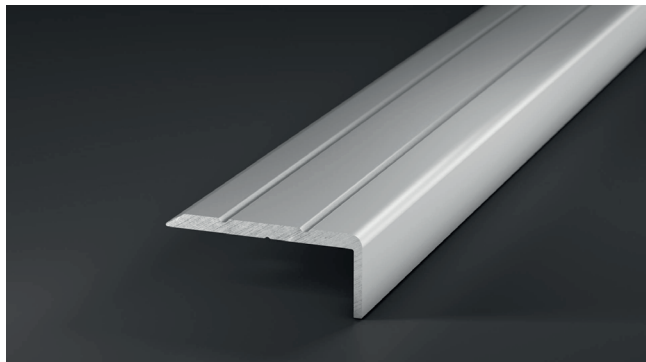


Strong contacts. Clever technology.

Technical Data Sheet

Angle edge no. 160, 24,5 x 10 mm



Angle edges are ideally suited as a small staircase angle, as a door threshold profile or as a termination on platforms. They protect the edges of the flooring permanently.

- > Aluminium.
- > Auto-adhesive.
- > Ideally suited as stair corner, door threshold section, end section on podiums etc.

Material:	EN AW 6063	DIN EN 573
Material condition:	T6	DIN EN 755-2
Pre-treatment:	E6	DIN EN 17 611
Anodised layer thickness:	Class 15	DIN EN 17 611
Decorative foil:	optional (wooden decors)	

Adhesive
 hotmelt adhesive (synthetic rubber-based)
 Viscosity: 10.000 +/- 3.000 mPa.s (170°C)
 (Brookfield RVT DV-II, Sp 27 ASTM D 3236)
 FDA state: acc. to § 175.105 Adhesives
 Protection: covered with silicone paper

Suitable for:

Design flooring / LVT, Elastic floor coverings, Textile floor coverings, Laminate / Multilayer

Installation method:

gluing

Lengths:

300 / 270 / 100 / 90 cm

Colour selection:

gold / sahara / silver / bronze / stainless steel matt / Stainless steel brushed

Decor selection:

beech / oak dark / oak light / maple / walnut